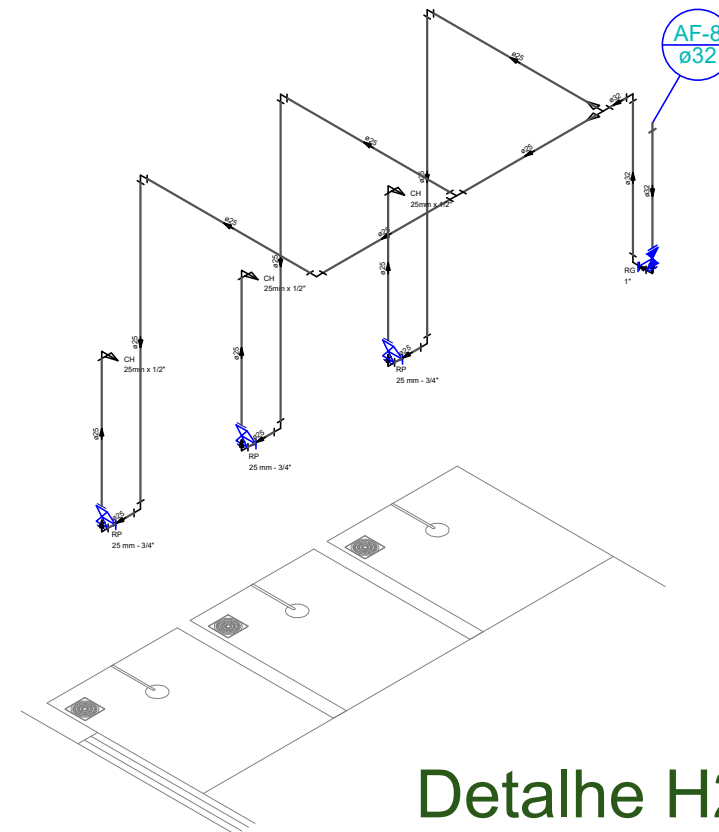
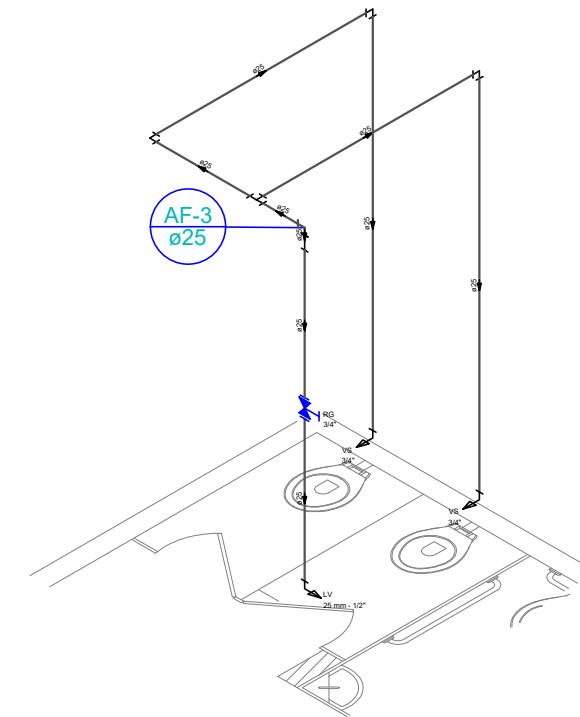


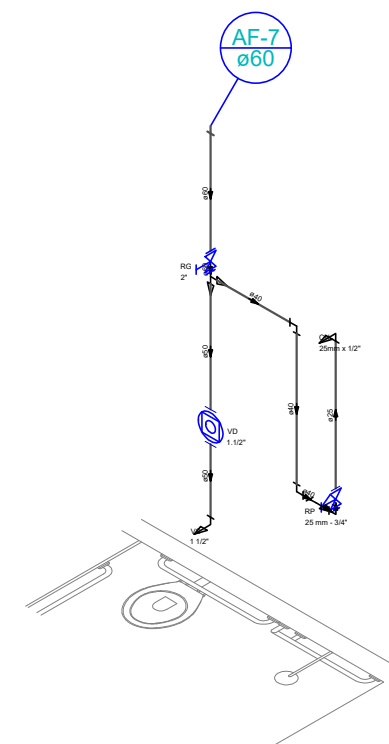
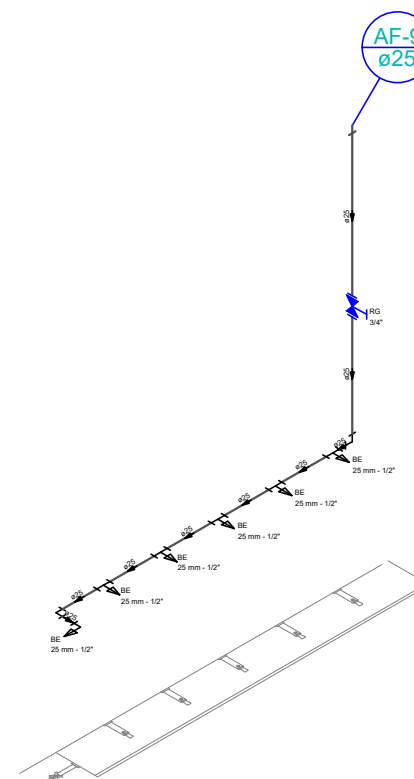
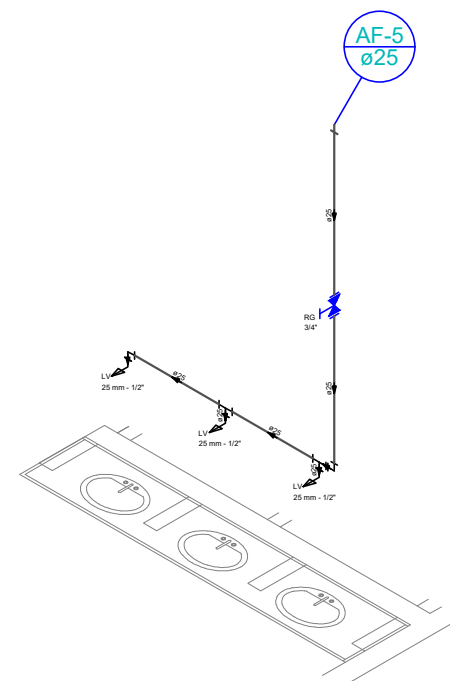
Detalhe H1
escala 1:50



Detalhe H2
escala 1:50



Detalhe H3
escala 1:50



PREFEITURA MUNICIPAL DE
VÁRZEA GRANDE
amar • cuidar • acreditar

PREFEITURA MUNICIPAL DE VÁRZEA GRANDE

LOCALIZAÇÃO: ANTÔNIO SOTÉRO DE ALMEIDA
Av. Julião de Brito, Parque do Lago, 78070-200.
Várzea Grande

ASSUNTO:
**CORTES
3D**

DATA:
JAN/2019

UNIDADE:
Metro

ESCALA:

PROJETO:

AGUA FRIA

AUTOR DO PROJETO:

LUAN BRENO ZANOLLO MILANI
ENGENHEIRO CIVIL CREA-MT 040706